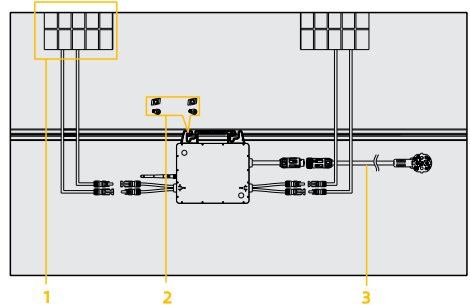




Quick Installation Guide EN

LSMi-600MS-01/LSMi-800MS-01



Dimension: 230 x 190 x 46.5mm

2. Installing

2.1 Installation Requirements

1. Please install the inverter in places that can avoid inadvertent contact.
2. The inverter should not be installed near inflammable or explosive objects.

AVOID



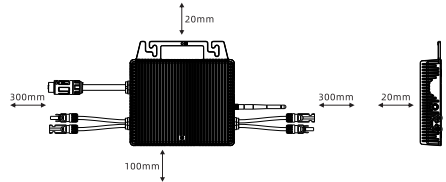
Direct Sunlight



Rain Exposure



Snow Lay up

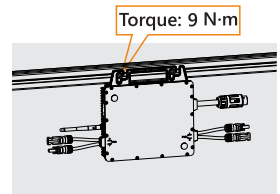
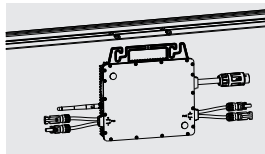
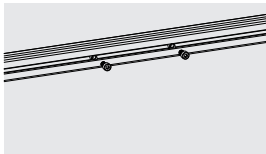


Note:

1. Install the inverter and all DC connections to avoid direct sunlight, rain exposure, snow buildup, UV, etc.
2. Leave enough space around the inverter enclosure to ensure ventilation and heat dissipation.

2.2 Mounting

1. Mark the position of each microinverter on the immovable structure, according to the PV module layout.
2. Fix the screw on the marked position.
3. Mount the microinverter and tighten the screws.



2.3 Installing the PE Cable

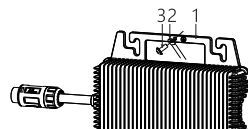
A second PE terminal is equipped at the bottom of the inverter. Ensure the PE terminal is reliably grounded and the grounding resistance is less than 10 Ohm.

⚠ NOTICE

Proper grounding connection of the second PE terminal is mandatory. NOT properly connecting both PE will void all product warranty.

Object	Description
1	Housing
2	M4 terminal lug with protective conductor
3	M4×11 pan head screw

Tighten it firmly into the housing (T20 screwdriver, torque: 1.4 N·m).



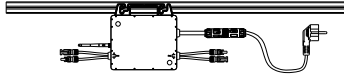
2.4 AC Connection

DANGER

Danger to Life due to High Voltages in the Inverter

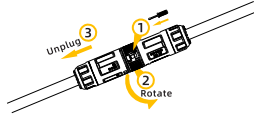
Before connecting any electrical wires and components, please ensure the DC switch & AC circuit breaker are switched OFF and cannot be reactivated.

1. Insert the AC to power plug cable into the AC connector of the micro inverter until it clicks.
2. Connect the AC to power plug cable to the local grid network.



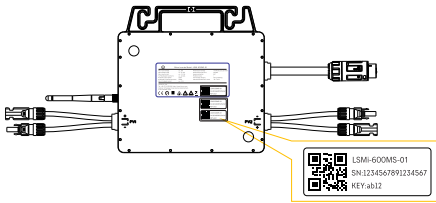
3. Push the buckle open with the tool as shown, rotate the latch as shown, unplug the male and female ends to unlock the cables.

Uninstallation



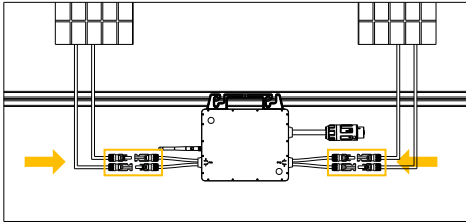
2.5 Serial Number Label

1. Peel the removable serial number label from each microinverter.
2. To prevent forgetting or misplacing it, make sure to securely store your serial number label. You can consider options like capturing a photo for safekeeping or keeping it in a designated file.



2.6 PV Connection

Connect the PV modules' DC cables to the DC input side of the micro inverter.



3. Commissioning

Please check if

1. The inverter and mounting parts have been correctly installed.
2. The inverter's exposed metal surface has a ground connection.
3. The grid voltage at the point of connection of the inverter is within the permitted range.
4. The AC circuit breaker must be correctly rated and wired.

Startup

1. Turn on the AC breaker for the branch circuit.
2. Turn on the main AC breaker for the house. Your system will start to generate power in about two minutes.

Web: www.linsum.com

E-mail: info@linsum.com

Service: service@linsum.com

+49-511-87592457

Hildesheimer Strasse 265-267, 30519 Hannover, Germany

+86-512-62818366

8 Chengwan Road, Suzhou Industrial Park, 215122 Suzhou, China

For more information, please download the user manual and other technical documents at www.linsum.com